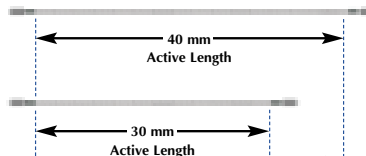


β -Rail™ 3.5F Delivery Catheter Marker Positions

Jacketed Radiation Source Trains (JRST)

NOTE: Wire Jacket Not Shown



Catheter with Preloaded IST

NOTE: IST = Indicator of Source Train



Fluoroscopic Images

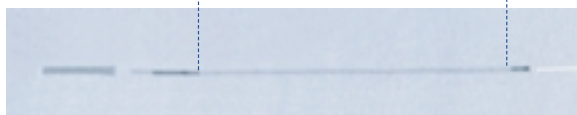
**Catheter with
Preloaded IST**



**Catheter Only
(IST removed)**



**Catheter with
40 mm JRST in
Treatment Position**



The appropriate JRST length (30 or 40 mm) is selected by determining the entire injury length and desired margin.



Novoste Corporate
3890 Steve Reynolds Blvd • Norcross, GA 30093
Tel: +1 770-717-0904 • Fax: +1 770-717-1283

**1-800-NOVOSTE
(1-800-668-6783)
www.novoste.com**

Novoste Europe GmbH
Hüttenallee 237 c • 47800 Krefeld Germany
Tel: +49-2151-507320 • Fax: +49-2151-5073250

© Novoste, Beta-Cath, β -Cath, β -Rail, the Beta-Cath System logo design and the Beta-Cath 3.5F System logo design are trademarks of Novoste Corporation. U.S. Patent Numbers 5,683,345; 5,899,882; 6,013,020 and 6,261,219. Other patents pending. © 2002 Novoste Corporation. All rights reserved.